

$$1.) \quad \frac{12}{28} = \frac{X}{42}$$

$$(12)(42) = 28X$$

$$\frac{504}{28} = \frac{28X}{28}$$

$$\boxed{18 = X}$$

$$2.) \quad \frac{8}{18} = \frac{X}{45}$$

$$(45)(8) = 18X$$

$$\frac{360}{18} = \frac{18X}{18}$$

$$\boxed{X = 20}$$

$$3.) \quad \frac{X+2}{8} = \frac{2X+10}{12}$$

$$12(X+2) = 8(2X+10)$$

$$12X + 24 = 16X + 80$$

$$-12X \quad -12X$$

$$24 = 4X + 80$$

$$-80 \quad -80$$

$$\frac{-56}{4} = \frac{4X}{4} \quad \boxed{X = -14}$$

In order to prepare for the upcoming break dancing competition at the 2024 Summer

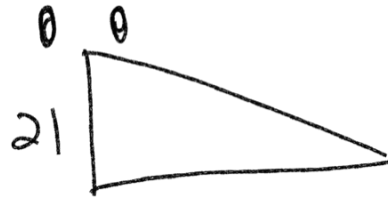
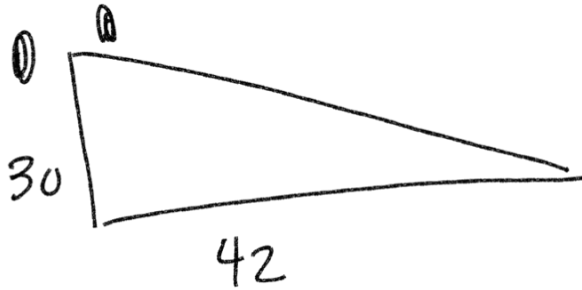
Games in Paris, Nate ate 76 donuts over 4 days. IF he maintained this exceedingly healthy and restrained diet, how long would it take for him to eat 3,000 donuts? You can support this "I love you 3000" initiative by going to [www.pleasedontdienate.com](http://www.pleasedontdienate.com),

$$\frac{76 \text{ donuts}}{4 \text{ days}} = \frac{3000 \text{ donuts}}{X}$$

$$76X = (3000)(4)$$

$$\frac{76X}{76} = \frac{12000}{76}$$

$$X = 158 \text{ days}$$



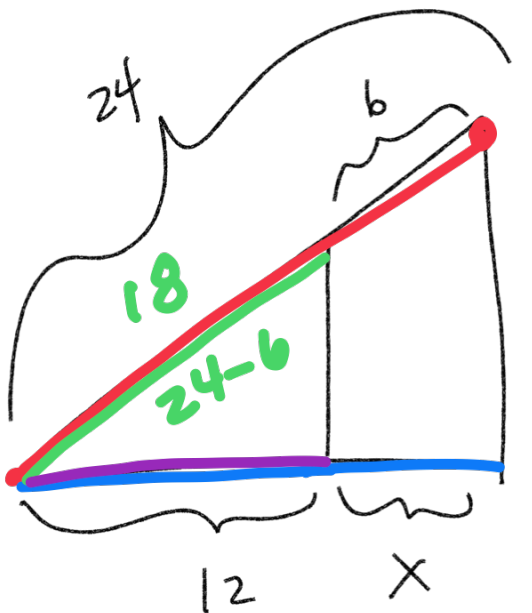
$$\frac{\text{Height } \beta}{\text{Height } L} = \frac{30}{21} = \frac{42}{X} = \frac{\text{Base } \beta}{\text{Base } L}$$

$$30X = (42)(21)$$

$$\frac{30X}{30} = \frac{882}{30} \quad X = 29.4$$

$$\frac{30}{42} = \frac{21}{X}$$

$$30X = (42)(21)$$



$$X = 4$$

Big

Lil'

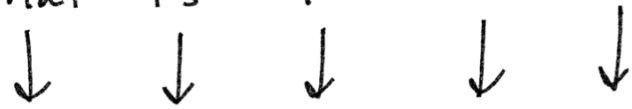
$$\frac{\text{Hyp}}{\text{Base}} = \frac{24}{12+X} = \frac{18}{12}$$

$$(24)(12) = 18(12+X)$$

$$288 = 216 + 18X$$

$$\frac{72}{18} = \frac{18X}{18}$$

What is 40% of 120?



$$X = 0.40 * 120$$

English



Math

$$X = 48$$

60% of what number is 84?



$$0.6 * X = 84$$

$$\frac{0.6X}{0.6} = \frac{84}{0.6}$$

$$X = 140$$

28 is what percent of 80?



$$28 =$$

X %

$$* 80$$

X → %

$$\frac{28}{80} = \frac{80X}{80}$$

$$X = \frac{28}{80} = 0.35 * 100\% = 35\%$$

1.) 70% of 30 is what number?  
↓ ↓ ↓ ↓  
0.70 \* 30 = X

$$\boxed{21 = X}$$

2.) 45 is what percent of 240?  
↓ ↓ ↓ ↓ ↓ ↓  
45 = X % \* 240

$$\frac{45}{240} = \frac{240X}{240}$$

$$X = \frac{45}{240} = 0.1875 * 100$$

$$\boxed{18.75\%}$$

3.) 84% of what number is 28?  
↓ ↓ ↓ ↓ ↓  
0.84 \* X = 28

$$\frac{0.84X}{0.84} = \frac{28}{0.84}$$

$$\boxed{X = 33.\bar{3}}$$

1.) 60 is what percent of 150?  
↓ ↓ ↓ % ↓ ↓  
60 = X \* 150

$$\frac{60}{150} = \frac{150 X}{150} \quad X = \frac{60}{150} = 0.4 * 100\% = \boxed{40\%}$$

2.) 72% of what number is 38?  
↓ ↓ ↓ ↓ ↓  
0.72 \* X = 38

$$0.72 X = \frac{38}{0.72} \quad \boxed{X = 52.7}$$

3.) 80% of 56 is what number?  
↓ ↓ ↓ ↓ ↓  
0.8 \* 56 = X

$$\boxed{X = 44.8}$$