

✓ quadrilateral
 ✓ parallelogram
 ✓ rhombus

2 pairs of parallel sides
 All 4 sides equal

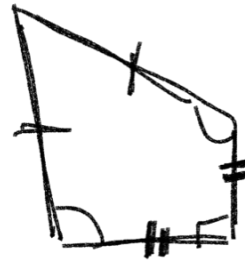
name: Rhombus

①



- parallelogram
 quadrilateral
 parallel

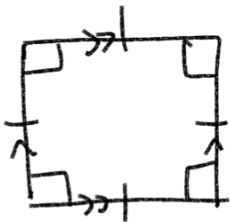
②



quadrilateral

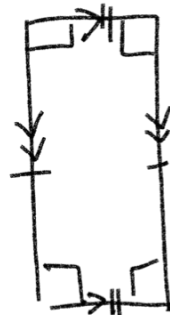
-kite

③



quadrilateral
 parallelogram
 rhombus
 rectangle
 -square

④



quadrilateral
 parallelogram
 -rectangle

Area

Area = base * height

squared
↓

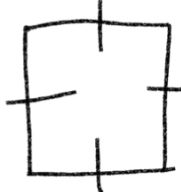
$A = 4 \text{ in} * 7 \text{ in} = 28 \text{ in}^2$
↑

1	2	3	4	5	6	7
8	9	10	11	12	13	14
15	16	17	18	19	20	21
22	23	24	25	26	27	28

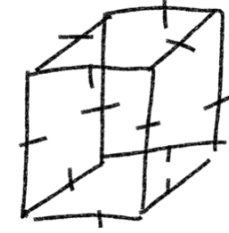
4 in {

height

base



square
2



cube
3

①

12 cm
3 cm

$12 \text{ cm} * 3 \text{ cm} = 36 \text{ cm}^2$

②

8 in
5 in

$8 \text{ in} * 5 \text{ in} = 40 \text{ in}^2$

③

1 ft
9 ft

$1 \text{ ft} * 9 \text{ ft} = 9 \text{ ft}^2$

④

18 cm
12 cm

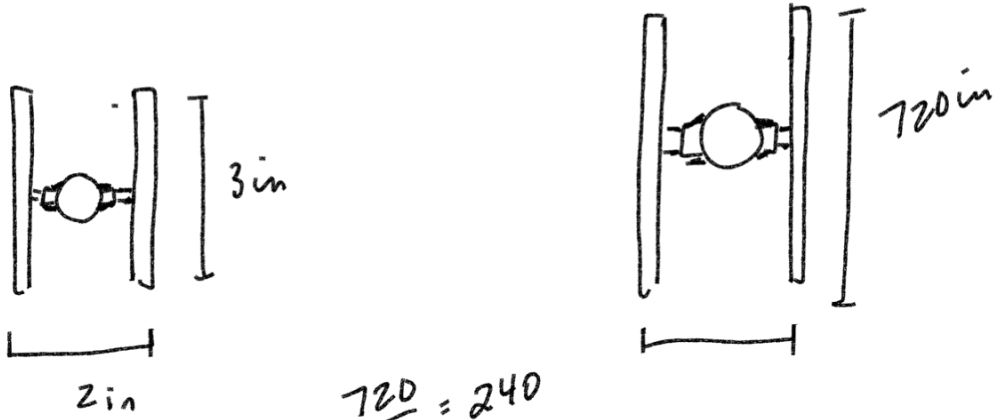
$18 \text{ cm} * 12 \text{ cm} = 216 \text{ cm}^2$

⑤

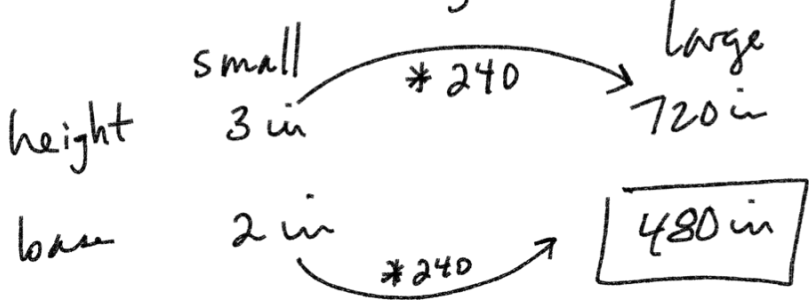
12 in
6 in

$12 \text{ in} * 6 \text{ in} = 72 \text{ in}^2$

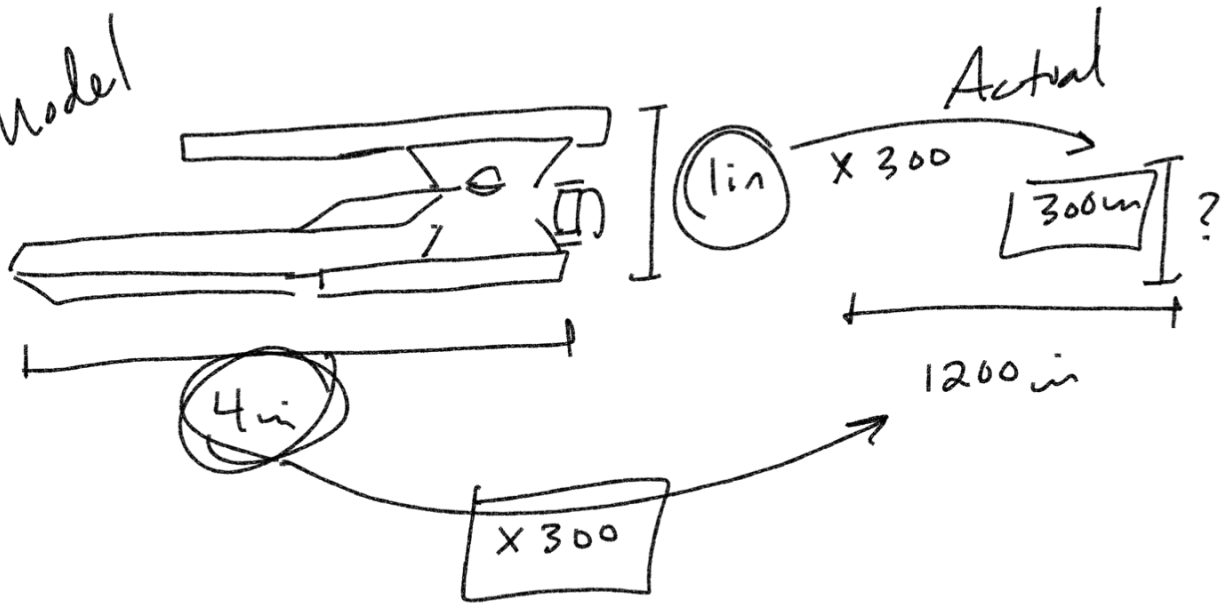
Scale



$$\frac{720}{3} = 240$$

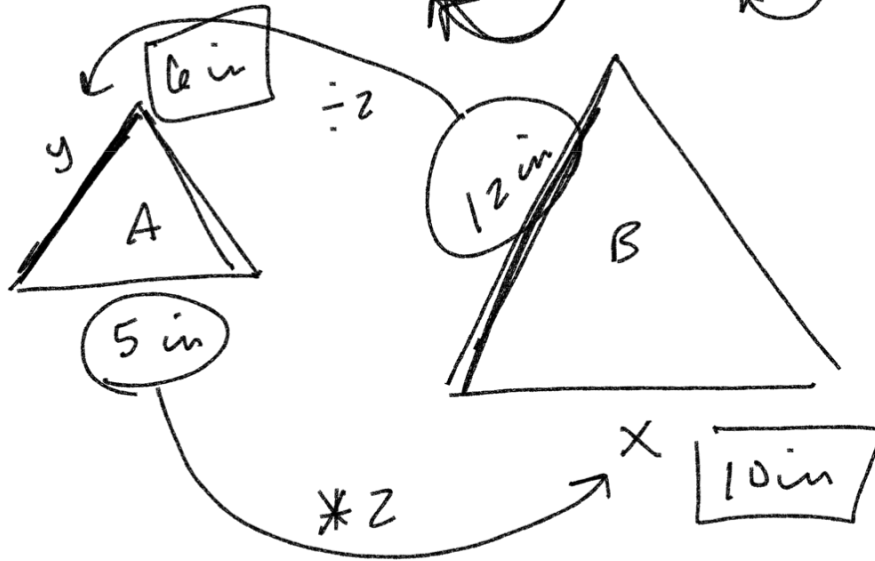


Model

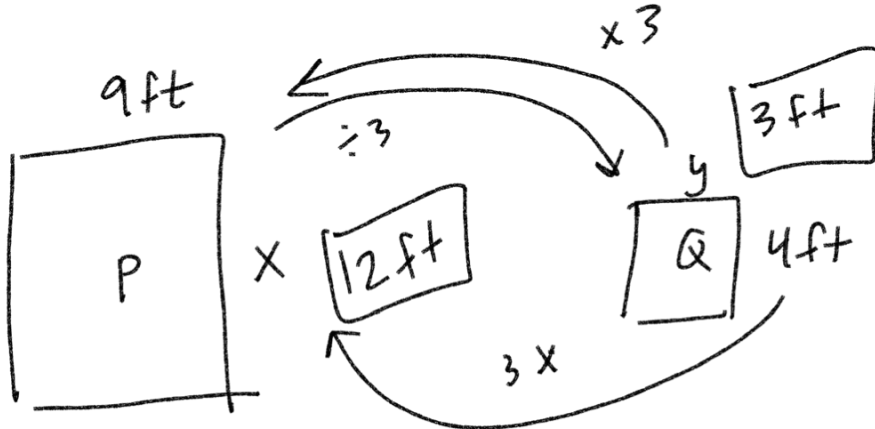


Scale factor of A to B is $1:2$

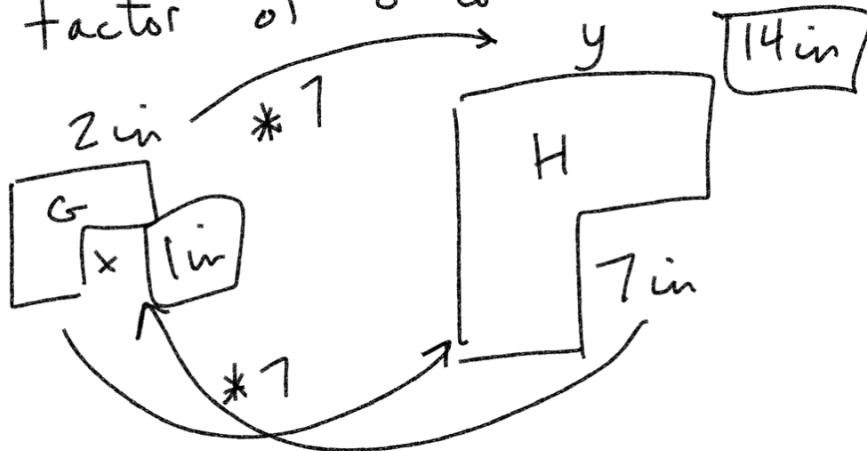
$A \xrightarrow{\times 2} B$
 $A \xleftarrow{\div 2} B$



Scale factor of Q to P is $1:3$



Scale factor of G to H is $1:7$



HW

Packet 6 (evens)
Supplemental WS

Online HW 15
Quiz 15

January 26th

HW/Quiz 13

No HW/Quiz 14

due tonight