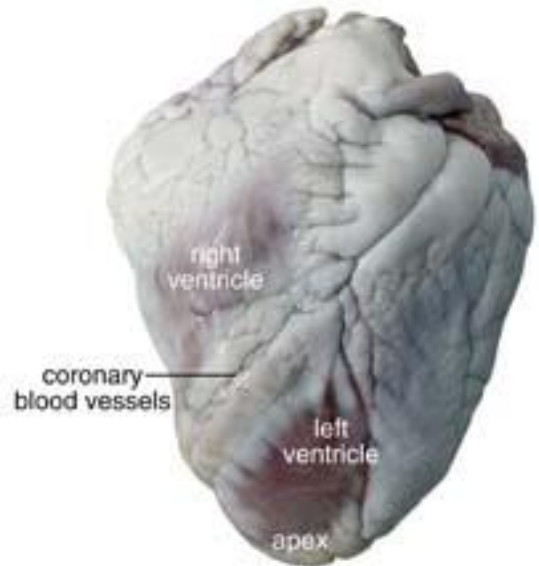


## Heart Lab

### Observation: External Anatomy

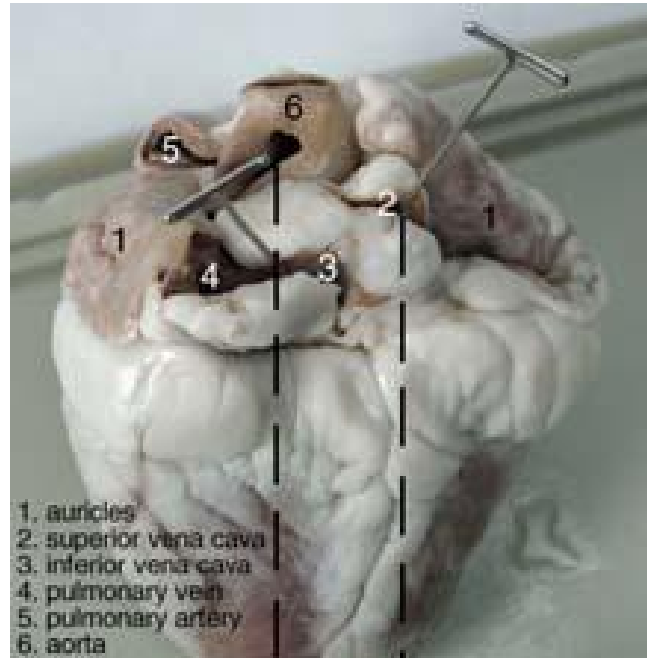
Most heart diagrams show the *left* atrium and ventricle on the *right* side of the diagram. Imagine the heart in the body of a person facing you. The left side of their heart is on *their* left, but since you are facing them, it is on *your* right.

1. Identify the right and left sides of the heart. Look closely and on one side you will see a diagonal line of blood vessels that divide the heart. The half that includes all of the **apex** (pointed end) of the heart is the left side. Confirm this by squeezing each half of the heart. The left half will feel much firmer and more muscular than the right side. (The left side of the heart is stronger because it has to pump blood to the whole body. The right side only pumps blood to the lungs.)



2. Turn the heart so that the right side is on your right as if it were in your body. Examine the flaps of darker tissue on the top of the heart. These ear-like flaps are called auricles. Find the large opening at the top of the heart next to the right auricle. This is the opening to the **superior vena cava**, which brings blood from the top half of the body to the **right atrium** (the **atria** are the top chambers in the heart). Stick a probe down this vessel. You should feel it open into the right atrium.

A little down and to the left of the superior vena cava there is another blood vessel opening. Insert your probe into this; it should also lead into the right atrium. This is the **inferior vena cava**, which brings blood from the lower tissues. You can also see another blood vessel next to the left auricle. This is a **pulmonary vein** that brings blood from the lungs into the **left atrium**.

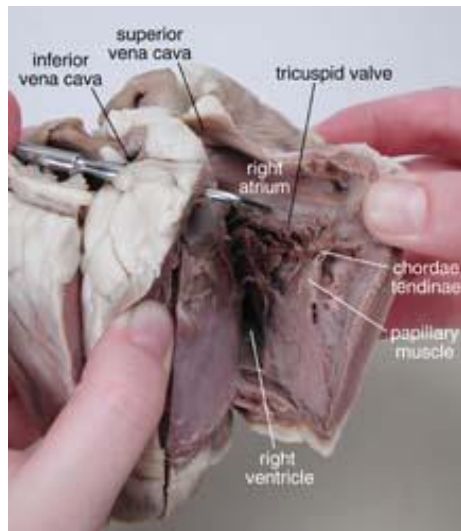


3. Sticking straight up from the center of the heart is the largest blood vessel you will see. This is the **aorta**, which takes oxygenated blood from the **left ventricle** to the rest of the body (the ventricles are the lower chambers of the heart). The aorta branches into more than one artery right after it leaves the heart, so it may have more than one opening on your heart specimen. Look carefully at the openings and you should be able to see that they are connected to each other.

4. Behind and to the left of the aorta there is another large vessel. This is the **pulmonary artery** which takes blood from the **right ventricle** to the lungs.

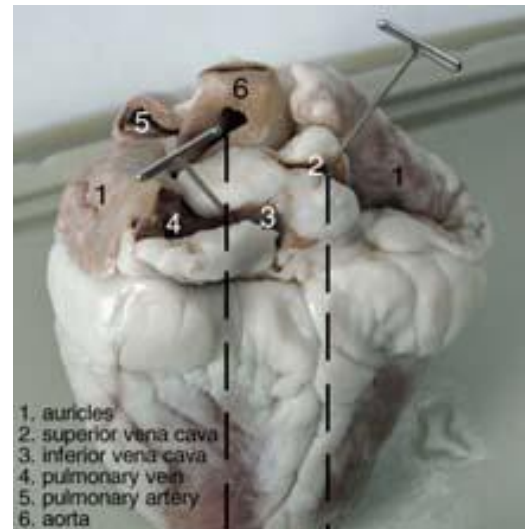
## Dissection: Internal Anatomy

1. Insert your dissecting scissors or scalpel into the superior vena cava and make an incision down through the wall of the right atrium and ventricle, as shown by the dotted line in the external heart picture. Pull the two sides apart and look for three flaps of the membrane. These membranes form the **tricuspid valve** between the right atrium and the right ventricle. The membranes



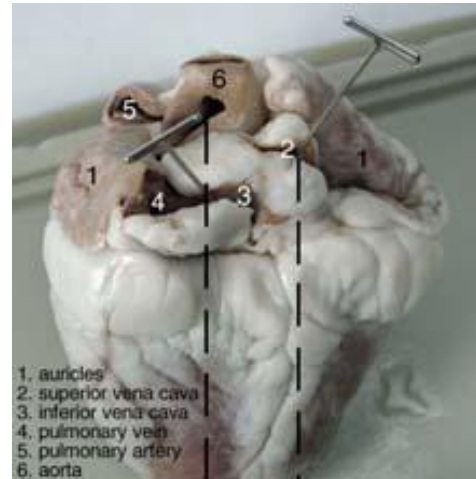
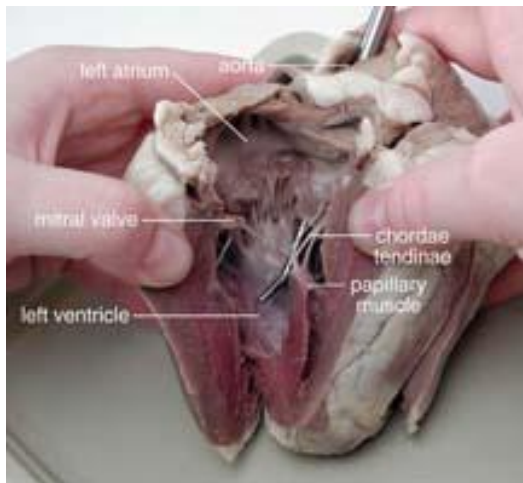
are connected to flaps of muscle

called the **papillary muscles** by tendons called the **chordae tendinae** or “heartstrings.” This valve allows blood to enter the ventricle from the atrium, but prevents backflow from the ventricle into the atrium.



2. Insert your probe into the pulmonary artery and see it come through to the right ventricle. Make an incision down through this artery and look inside it for three small membranous pockets. These form the **pulmonary semilunar valve** which prevents blood from flowing back into the right ventricle.

3. Insert your dissecting scissors or scalpel into the left auricle at the base of the aorta and make an incision down through the wall of the left atrium and ventricle, as shown by the dotted line in the external heart picture. Locate the **mitral valve** (or bicuspid valve) between the left atrium and ventricle. This will have two flaps of membrane connected to papillary muscles by tendons.



4. Insert a probe into the aorta and observe where it connects to the left ventricle. Make an incision up through the aorta and examine the inside carefully for three small membranous pockets. These form the **aortic semilunar valve** which prevents blood from flowing back into the left ventricle.