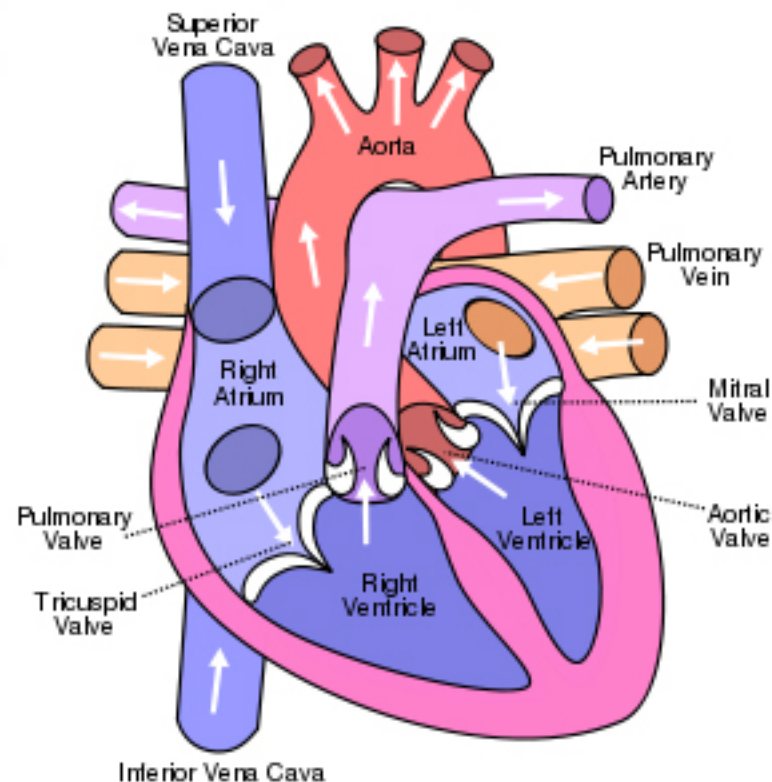
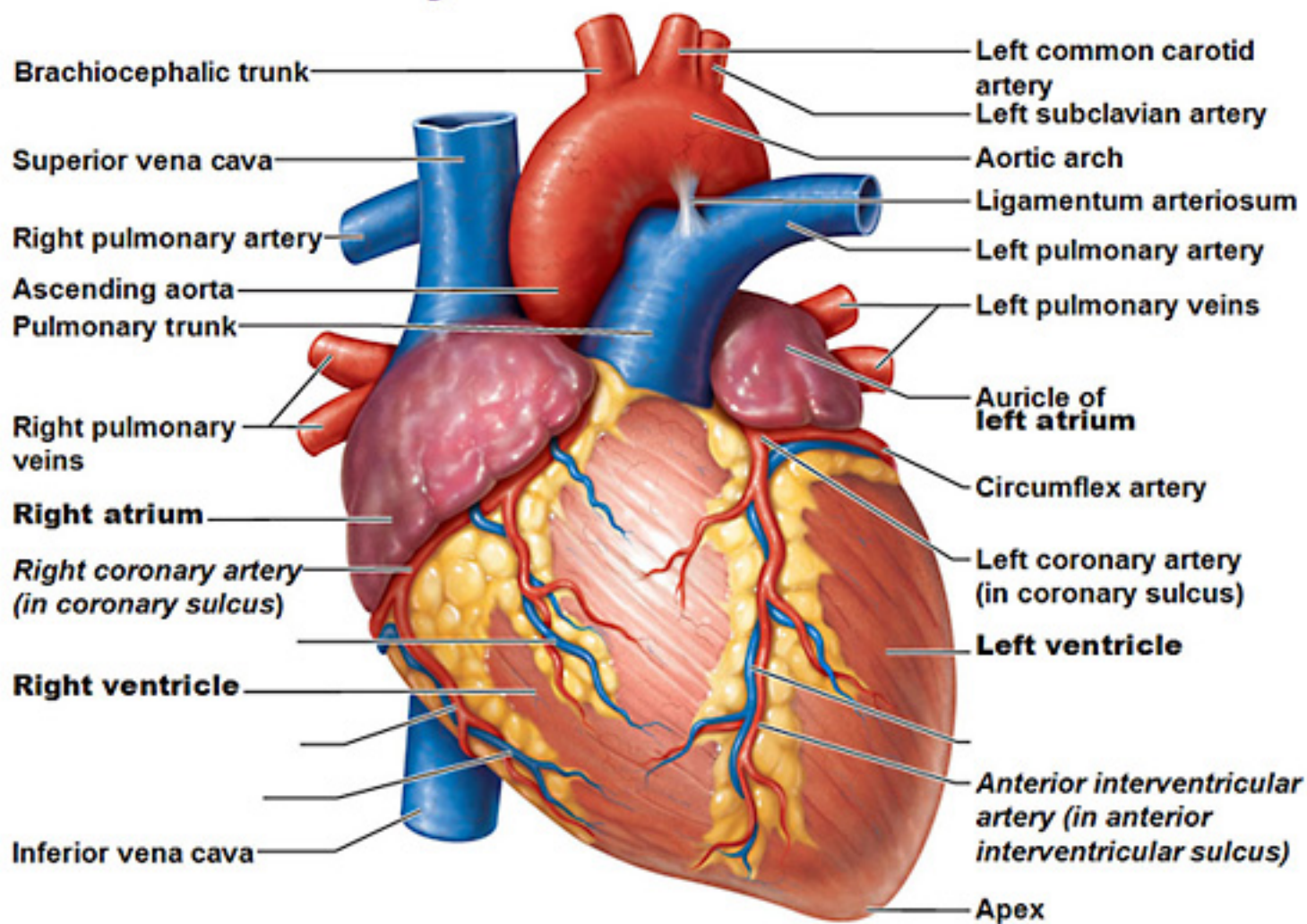


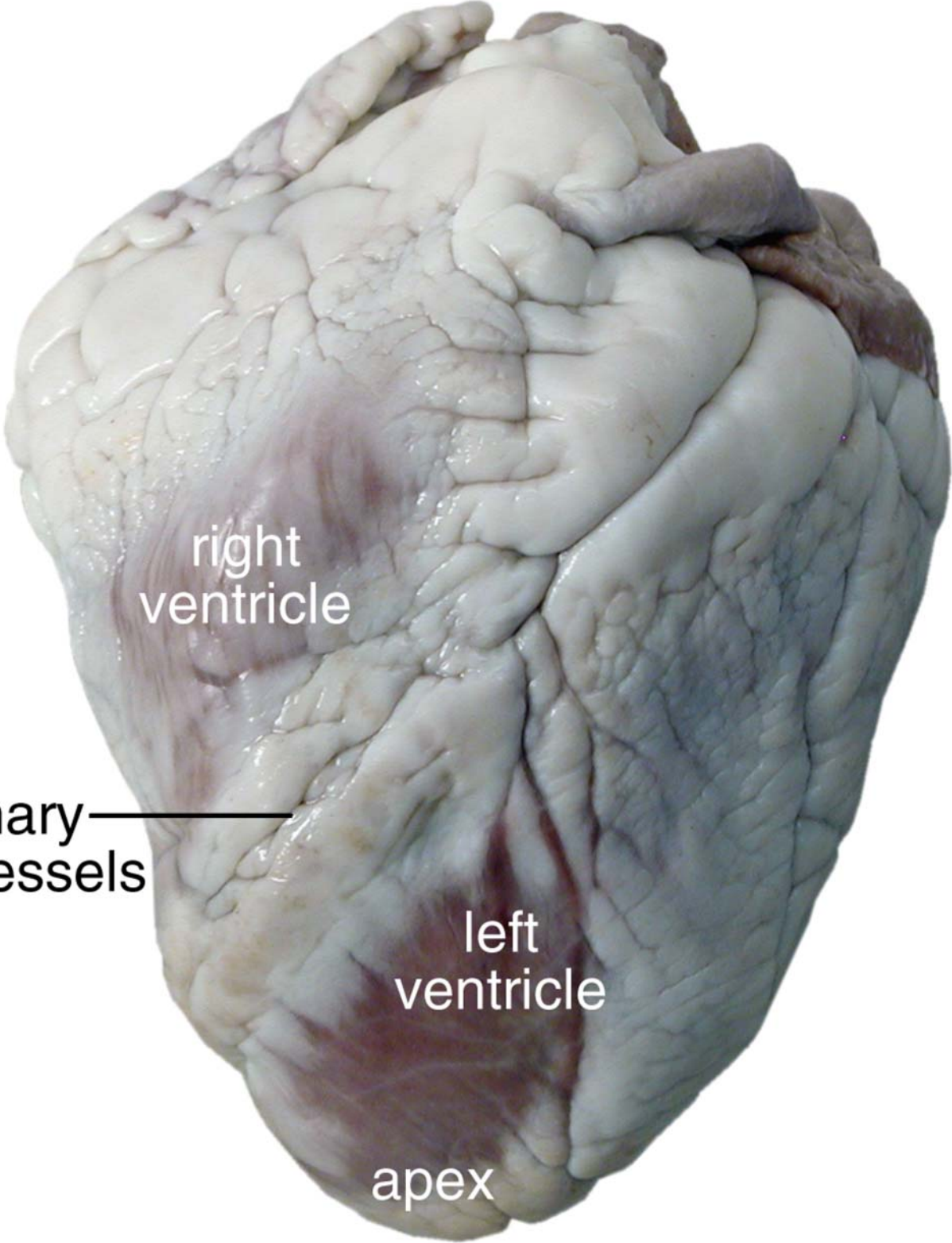
Circulation of Blood Through the Heart:



Gross Anatomy of the Heart

Anterior view



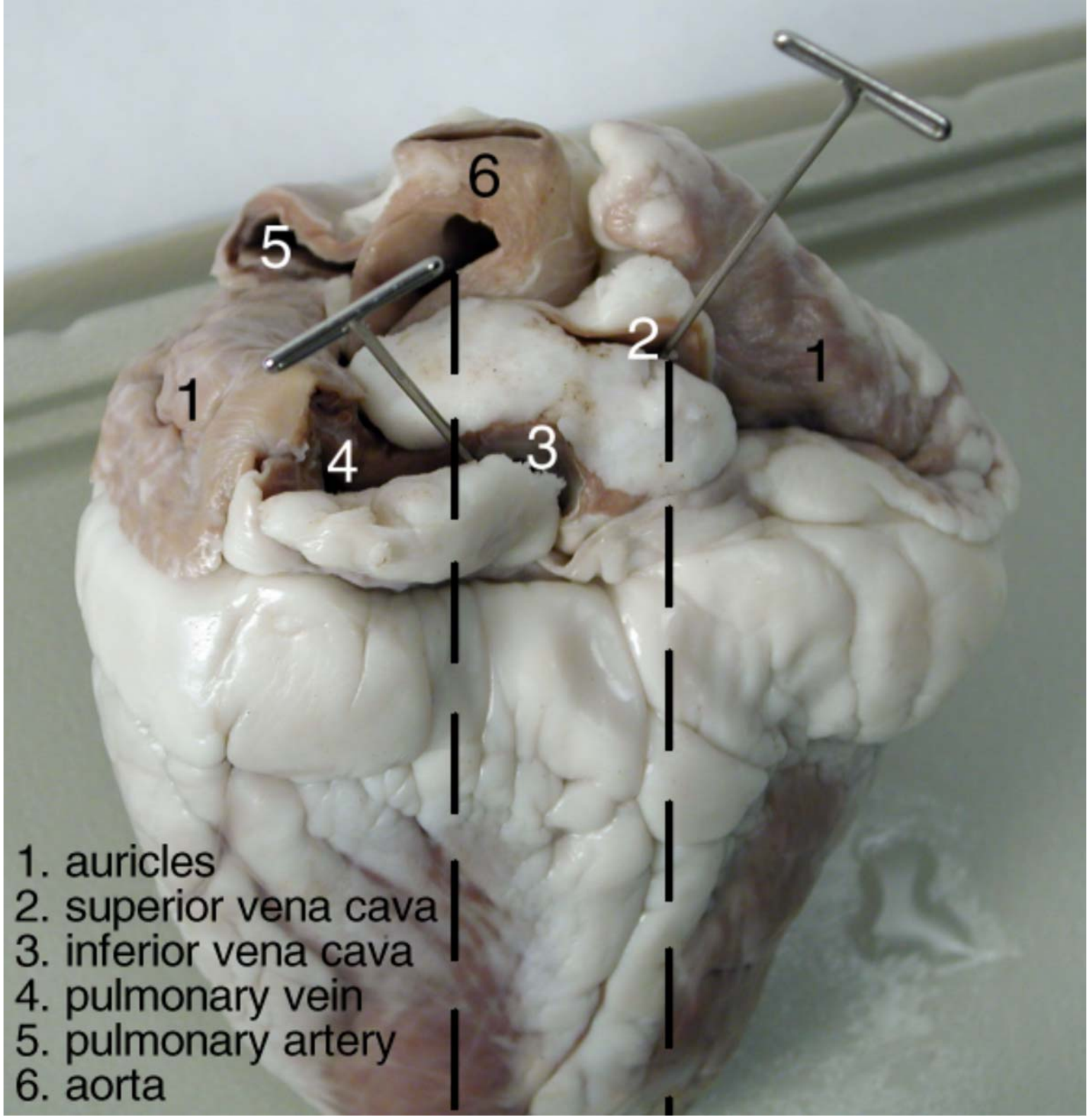


right
ventricle

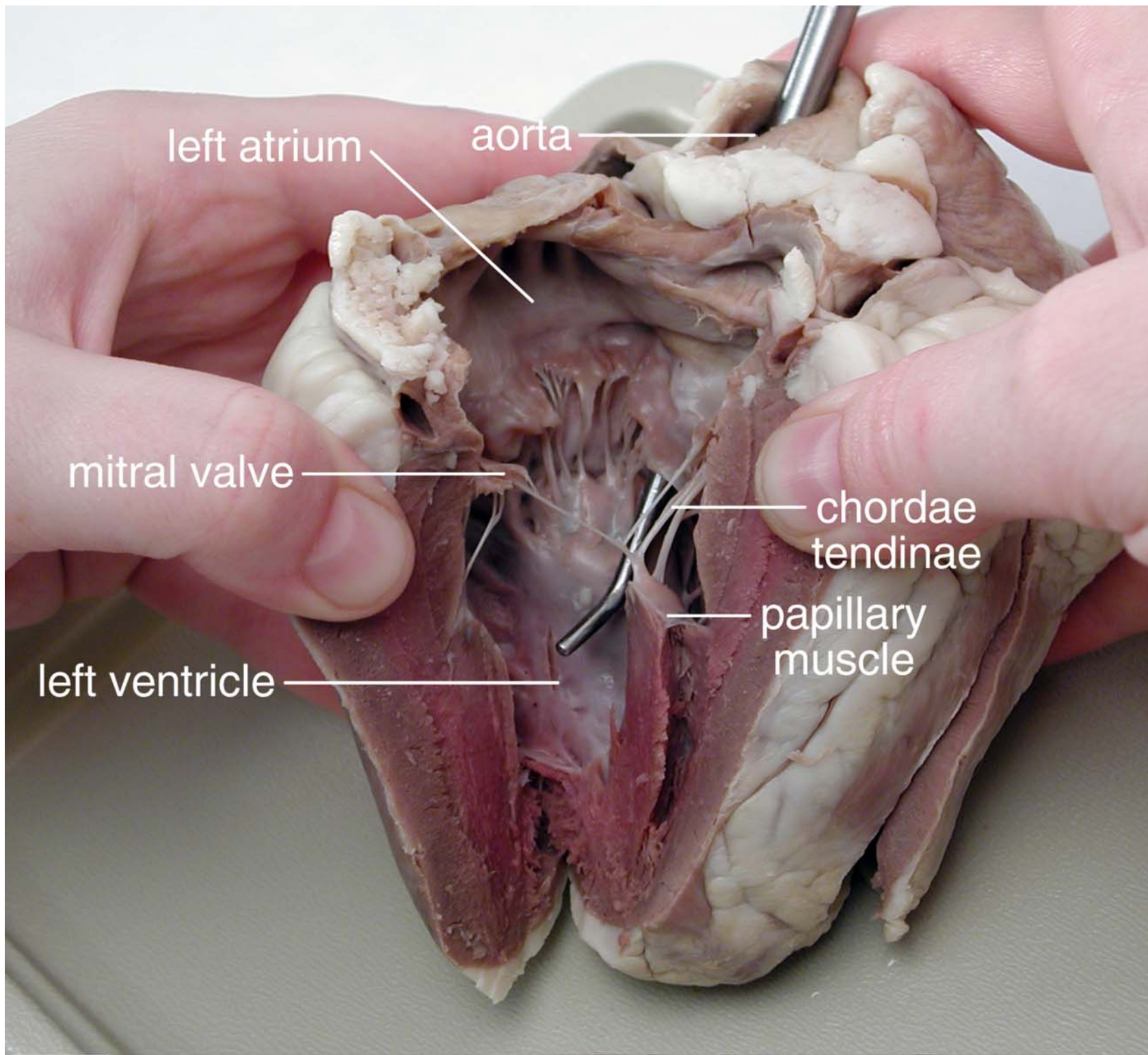
coronary —
blood vessels

left
ventricle

apex



- 1. auricles
- 2. superior vena cava
- 3. inferior vena cava
- 4. pulmonary vein
- 5. pulmonary artery
- 6. aorta



left atrium

aorta

mitral valve

chordae
tendinae

left ventricle

papillary
muscle

